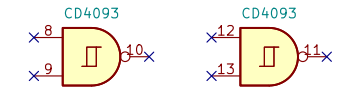
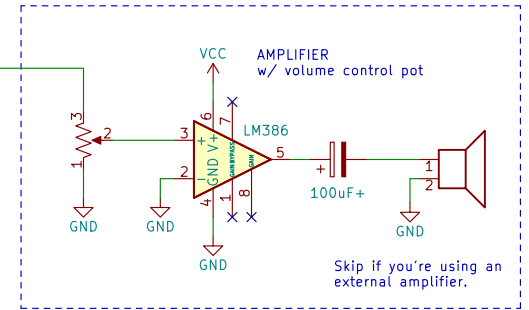
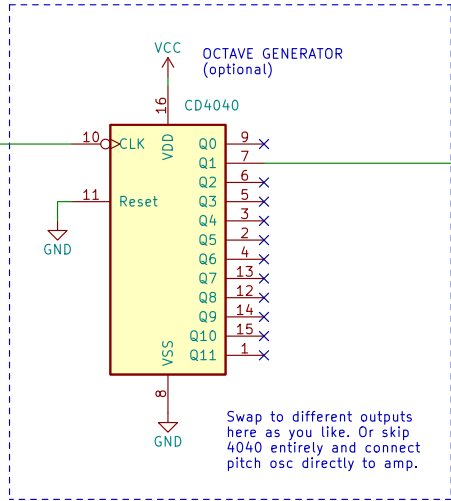
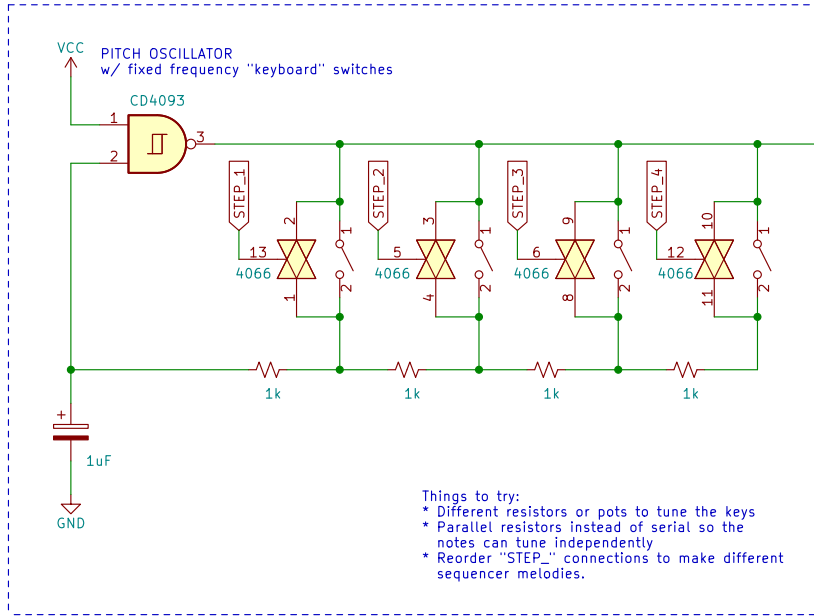


Chips that have multiple schematic symbols like the 4093 and 4066 will have their power/ground connections split off into their own little block so you don't forget them. Don't forget them!



Two of the NAND gates will be unused. Remember that the gates are all interchangeable, so use whichever are convenient to get to.



tommy@oskitone.com

Sheet: /
File: keyboard_sequencer.kicad_sch

Title: keyboard sequencer

Size: A4 Date: May 2024
KiCad E.D.A. eeschema (6.0.1-0)

Rev:
Id: 1/1